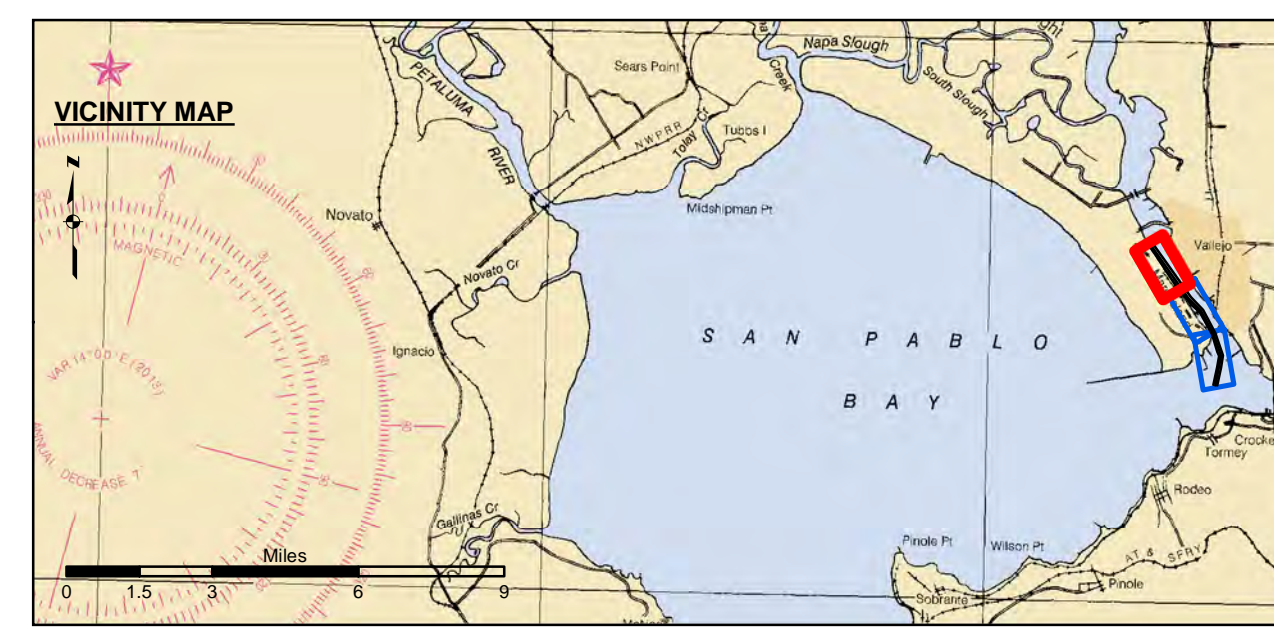


NAD 83 CHANNEL ANGLE POINT		
Angle Pt	X	Y
C01	6051581.21	2230222.67
C02	6055795.81	2224330.97
C03	6057191.11	2222944.87
C04	6058518.11	2220503.97
C05	6059347.51	2218102.87
C06	6058696.31	2214902.17

NAD 83 CHANNEL ANGLE POINT		
Angle Pt	X	Y
1	6051829.91	2230390.67
2	6052091.81	2230024.57
3	6056039.61	2224505.87
4	6057346.91	2223082.07
5	6058699.11	2220590.07
6	6059555.31	2218121.17
7	6058891.41	2214858.27
8	6058501.11	2214945.97
9	6059139.71	2218084.57
10	6058937.71	2218596.57
11	6058337.01	2220417.87
12	6057035.31	2222807.67
13	6056140.51	2223621.17
14	6054337.11	2225843.77
15	6051448.71	2230133.17

PRELIMINARY ISSUE
THIS PLAN ISSUED FOR
ADVANCE INFORMATION ONLY



Federal Navigation Channel	Beacon, General	Contours
Shoaling Area	Obstruction Point	-35
Placement Area	Navigation Buoy	-34
Anchorage Area	Navigation Buoy	-33
Wreck Area	Shoalest Sounding*	-32
Submerged Wreck		-31
Angle Point		

NOTES:
DRAWING NOT TO BE USED FOR NAVIGATION. ONLY CHANNEL CONDITION AT DATE OF SURVEY.
THE LOCATION OF ALL NAVIGATION AIDS ARE BASED ON INFORMATION PROVIDED BY THE U.S. COAST GUARD. BUOY LOCATIONS REPRESENT THE POSITION OF THE SINKER ONLY.
SURVEYED BY THE CORPS OF ENGINEERS.
SOUNDINGS WERE TAKEN BY FATHOMETER AND ARE SHOWN TO THE NEAREST TENTH OF A FOOT.
SOUNDINGS ARE BASED ON THE DATUM OF MEAN LOWER LOW WATER AT THE LOCALITY.
VERTICAL CONTROL:
USACE BM NAPAR03, MLLW=11,609 FT
MARK LOCATED ON PIER 56, MARE ISLAND

NOS BM 5216 K 1976 (PID-J76537), MLLW = 12,136 FT
MARK US LOCATED AT SOUTH END OF MARE ISLAND
http://tidesandcurrents.noaa.gov/data_menu.shtml?stn=9415218
MARE ISLAND, CA & TYPE = BENCH MARK SHEETS

TIDE GAUGE LOCATION:
1. NOAA STATION 941 5218 - ONLINE
2. MARE ISLAND BERTH 2

HORIZONTAL GPS CONTROL
COAST GUARD D-BEACON

PLANE GRID AND COORDINATES ARE BASED ON THE STATE OF CALIFORNIA COORDINATE SYSTEM, LAMBERT CONFORMAL PROJECTION, ZONE III NAD 83, CALIFORNIA, AS DESCRIBED IN SPECIAL PUBLICATION NO. 235, PUBLISHED BY NATIONAL OCEAN SURVEY.

1.00 INDICATES THE NUMBER AND BEGINNING OF A LINE OF SOUNDINGS.
PROJECT DEPTH IS 30 FEET FOR MAIN CHANNEL AND 36 FT FOR NAVY CHANNEL

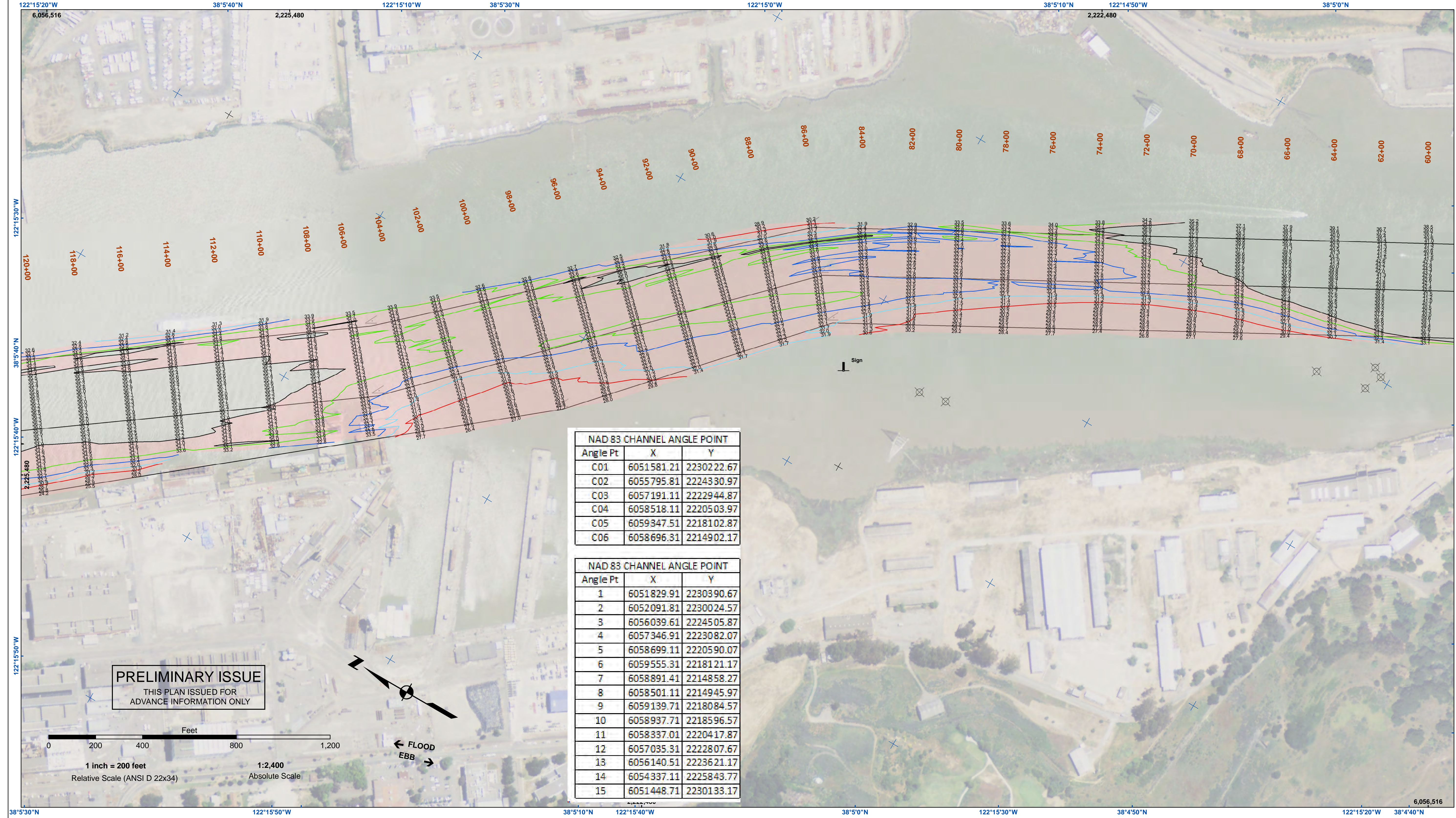
US Army Corps of Engineers
San Francisco District
450 Market Street
San Francisco, CA 94102

DISCLAIMER: The United States Government furnishes no warranty, expressed or implied, concerning the accuracy, completeness, or information and the United States shall be under no liability whatsoever to any person by reason of any use made thereof. These data belong to the Government. Therefore the recipient may not transfer these data to others without also transferring this Disclaimer.

Prepared Under the Direction of JOHN D. CUNNINGHAM LT COLONEL, C.E. DISTRICT ENGINEER	Chart Date: Nov 26, 2019
Submitted: Hydro Survey Team Leader	Designed by: PDT
Recommended: Chief, Hydro Survey Section	Drawn by: PDT
Approved: Chief, Construction Branch	

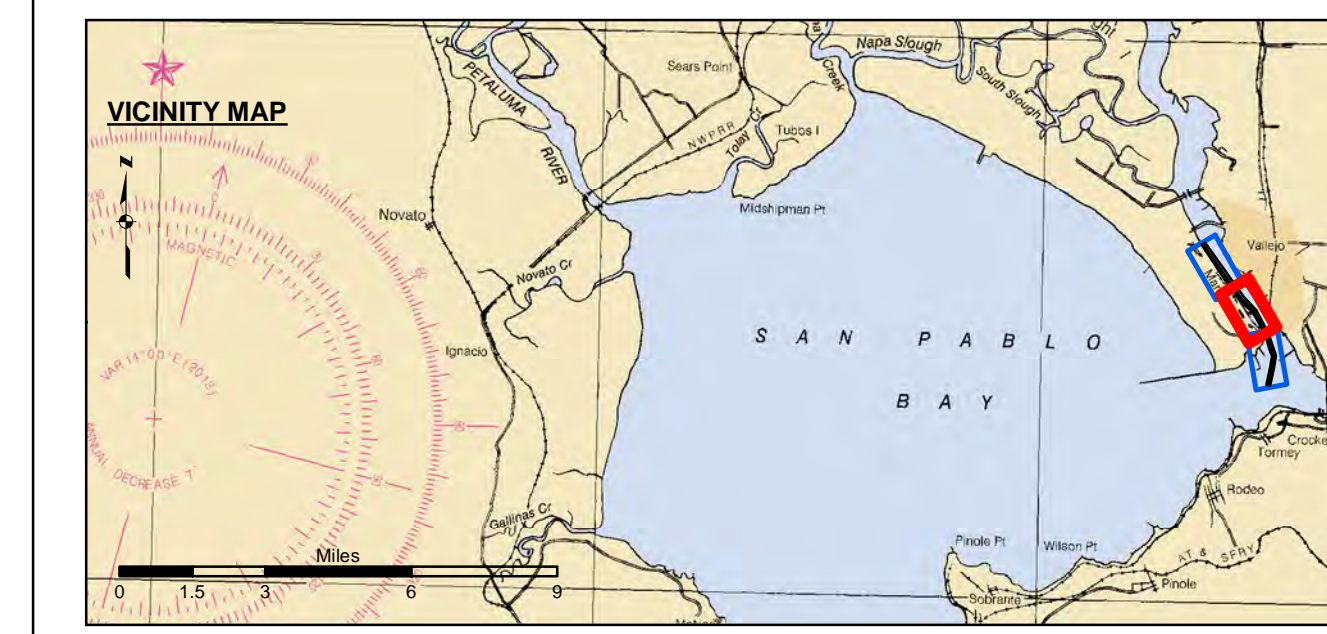
CALIFORNIA
MARE ISLAND STRAIT
CONDITION SURVEY
30 SEPTEMBER 2019

Sheet Reference Number
1 of 3



NAD 83 CHANNEL ANGLE POINT		
Angle Pt	X	Y
C01	6051581.21	2230222.67
C02	6055795.81	2224330.97
C03	6057191.11	2222944.87
C04	6058518.11	2220503.97
C05	6059347.51	2218102.87
C06	6058696.31	2214902.17

NAD 83 CHANNEL ANGLE POINT		
Angle Pt	X	Y
1	6051829.91	2230390.67
2	6052091.81	2230024.57
3	6056039.61	2224505.87
4	6057346.91	2223082.07
5	6058699.11	2220590.07
6	6059555.31	2218121.17
7	6058891.41	2214858.27
8	6058501.11	2214945.97
9	6059139.71	2218084.57
10	6058937.71	2218596.57
11	6058337.01	2220417.87
12	6057035.31	2222807.67
13	6056140.51	2223621.17
14	6054337.11	2225843.77
15	6051448.71	2230133.17



Federal Navigation Channel	Beacon, General	Contours
Shoaling Area	Obstruction Point	
Placement Area	Navigation Buoy	
Anchorage Area	Navigation Buoy	
Wreck Area	Shoalest Sounding*	
Submerged Wreck		-35
Angle Point		-34
		-33
		-32
		-31

NOTES:
 DRAWING NOT TO BE USED FOR NAVIGATION. ONLY CHANNEL CONDITION AT DATE OF SURVEY.
 THE LOCATION OF ALL NAVIGATION AIDS ARE BASED ON INFORMATION PROVIDED BY THE U.S. COAST GUARD. BUOY LOCATIONS REPRESENT THE POSITION OF THE SINKER ONLY.
 SURVEYED BY THE CORPS OF ENGINEERS.
 SOUNDINGS WERE TAKEN BY FATHOMETER AND ARE SHOWN TO THE NEAREST TENTH OF A FOOT.
 SOUNDINGS ARE BASED ON THE DATUM OF MEAN LOWER LOW WATER AT THE LOCALITY.
 VERTICAL CONTROL:
 USACE BM NAPAR03, MLLW=11,609 FT
 MARK LOCATED ON PIER 56, MARE ISLAND

NOS BM 5216 K 1976 (PID-JT9537), MLLW = 12.136 FT
 MARK US LOCATED AT SOUTH END OF MARE ISLAND
 http://idesandcurrents.noaa.gov/data_menu.shtml?stn=9415218
 MARE ISLAND, CA & TYPE = BENCH MARK SHEETS

TIDE GAUGE LOCATION:
 1. NOAA STATION 941 5218 - ONLINE
 2. MARE ISLAND BERTH 2

HORIZONTAL GPS CONTROL
 COAST GUARD D-BEACON

PLANE GRID AND COORDINATES ARE BASED ON THE STATE OF CALIFORNIA COORDINATE SYSTEM, LAMBERT CONFORMAL PROJECTION, ZONE III NAD 83, CALIFORNIA, AS DESCRIBED IN SPECIAL PUBLICATION NO. 235, PUBLISHED BY NATIONAL OCEAN SURVEY.

1.00 INDICATES THE NUMBER AND BEGINNING OF A LINE OF SOUNDINGS.
 PROJECT DEPTH IS 30 FEET FOR MAIN CHANNEL AND 36 FT FOR NAVY CHANNEL

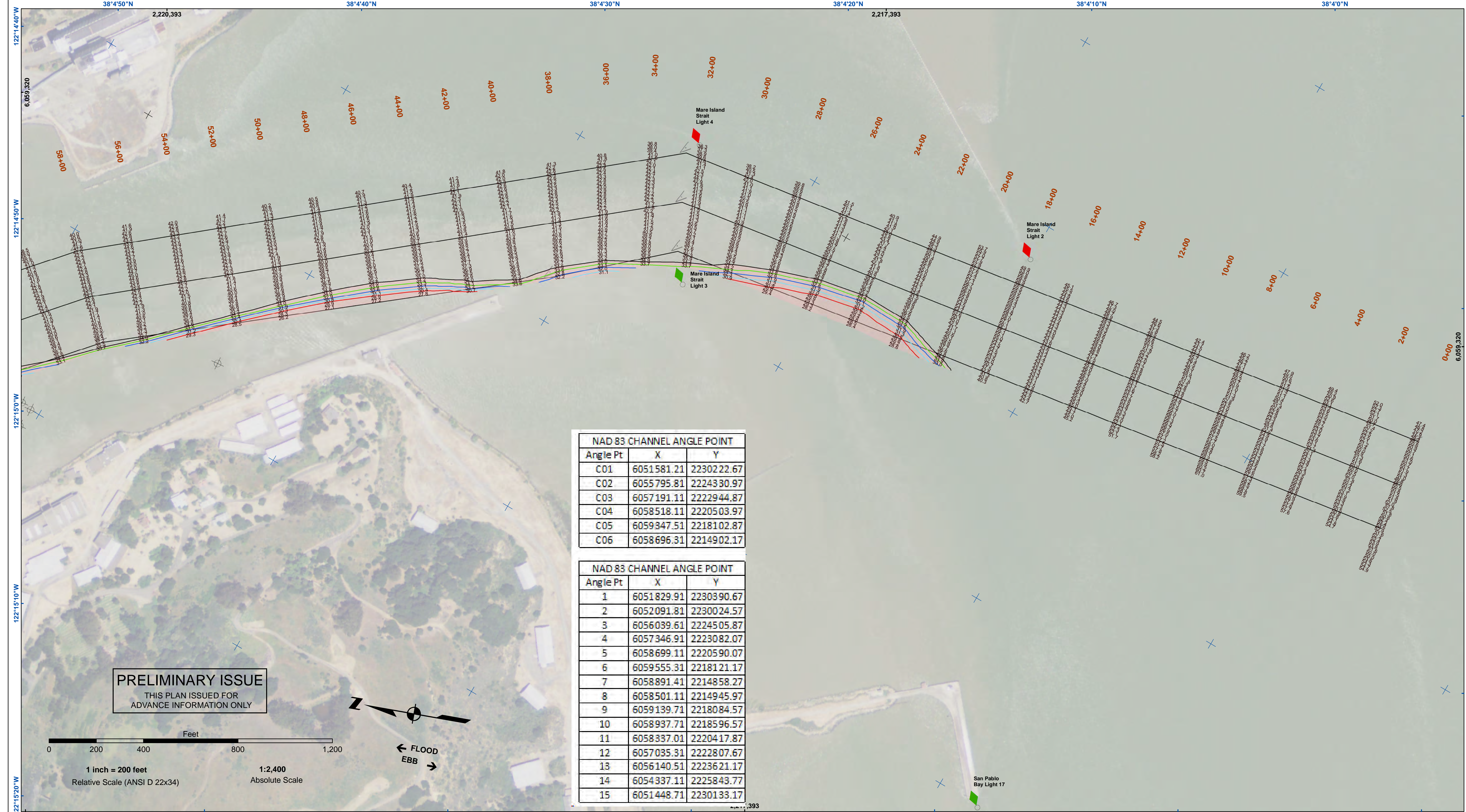


DISCLAIMER: The United States Government furnishes access to this data for informational purposes only. The user is responsible for the results of any application of the data for other than its intended purpose. The United States Government makes no warranties, expressed or implied, concerning the accuracy, completeness, or reliability of the data furnished. The United States shall be under no liability whatsoever to any person by reason of any use made thereof. These data belong to the Government. Therefore the recipient may not transfer these data to others without also transferring this Disclaimer.

Chart Date:	Nov 26, 2019
Designed by:	PDT
Drawn by:	PDT
Surveyed By:	Plotted By: PDT
Checked By:	PDT
Approved:	Chief, Construction Branch

MARIN COUNTY
 CALIFORNIA
MARE ISLAND STRAIT
CONDITION SURVEY
30 SEPTEMBER 2019

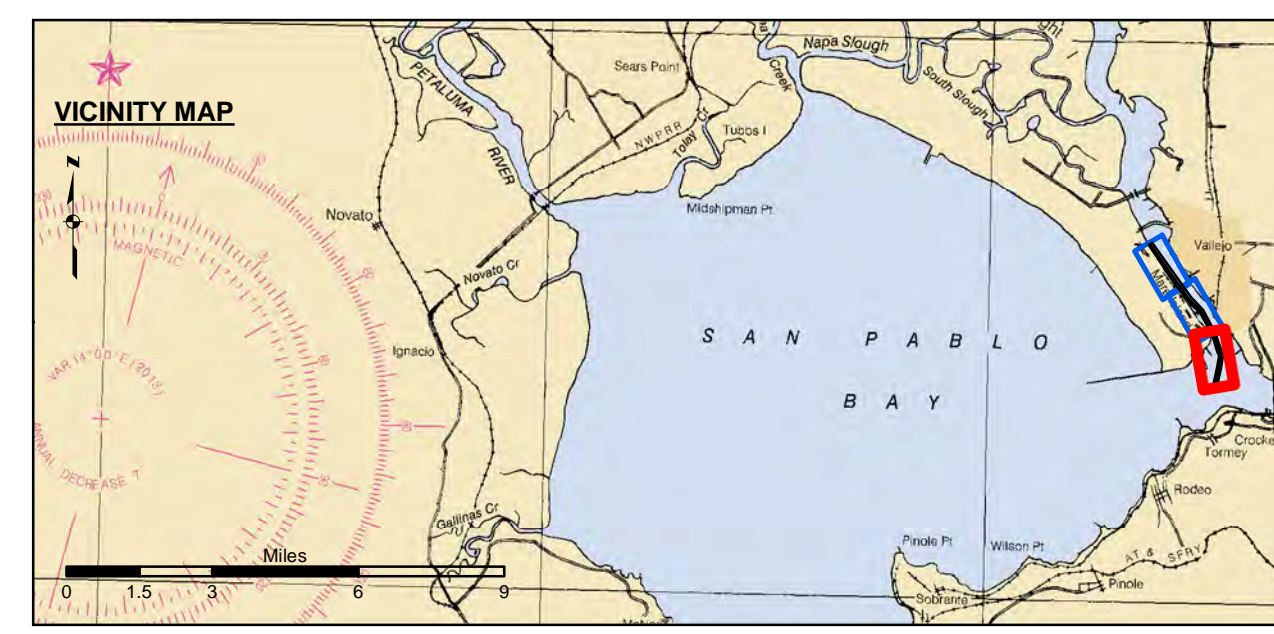
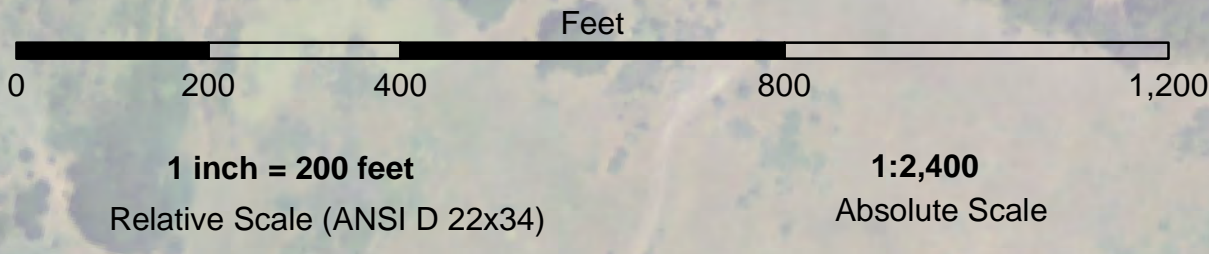
Sheet Reference Number
2 of 3



NAD 83 CHANNEL ANGLE POINT		
Angle Pt	X	Y
C01	6051581.21	2230222.67
C02	6055795.81	2224330.97
C03	6057191.11	2222944.87
C04	6058518.11	2220503.97
C05	6059347.51	2218102.87
C06	6058696.31	2214902.17

NAD 83 CHANNEL ANGLE POINT		
Angle Pt	X	Y
1	6051829.91	2230390.67
2	6052091.81	2230024.57
3	6056039.61	2224505.87
4	6057346.91	2223082.07
5	6058699.11	2220590.07
6	6059555.31	2218121.17
7	6058891.41	2214858.27
8	6058501.11	2214945.97
9	6059139.71	2218084.57
10	6058937.71	2218596.57
11	6058337.01	2220417.87
12	6057035.31	2222807.67
13	6056140.51	2223621.17
14	6054337.11	2225843.77
15	6051448.71	2230133.17

PRELIMINARY ISSUE
THIS PLAN ISSUED FOR
ADVANCE INFORMATION ONLY



Federal Navigation Channel	Beacon, General	Contours
Shoaling Area	Obstruction Point	
Placement Area	Navigation Buoy	
Anchorage Area	Navigation Buoy	
Wreck Area	Shoalest Sounding*	
Submerged Wreck		-35
Angle Point		-34
		-33
		-32
		-31

NOTES:
DRAWING NOT TO BE USED FOR NAVIGATION. ONLY CHANNEL CONDITION AT DATE OF SURVEY.
THE LOCATION OF ALL NAVIGATION AIDS ARE BASED ON INFORMATION PROVIDED BY THE U.S. COAST GUARD. BUOY LOCATIONS REPRESENT THE POSITION OF THE SINKER ONLY.

SURVEYED BY THE CORPS OF ENGINEERS.
SOUNDINGS WERE TAKEN BY FATHOMETER AND ARE SHOWN TO THE NEAREST TENTH OF A FOOT.
SOUNDINGS ARE BASED ON THE DATUM OF MEAN LOWER LOW WATER AT THE LOCALITY.

VERTICAL CONTROL:
USACE BM NAPA03, MLLW=11.609 FT
MARK LOCATED ON PIER 56, MARE ISLAND

NOS BM 5216 K 1976 (PID-J76537), MLLW = 12.136 FT
MARK US LOCATED AT SOUTH END OF MARE ISLAND
http://tidesandcurrents.noaa.gov/data_menu.shtml?stn=9415218
MARE ISLAND, CA & TYPE = BENCH MARK SHEETS

TIDE GAUGE LOCATION:
1. NOAA STATION 941 5218 - ONLINE
2. MARE ISLAND BERTH 2

HORIZONTAL GPS CONTROL
COAST GUARD D-BEACON

PLANE GRID AND COORDINATES ARE BASED ON THE STATE OF CALIFORNIA COORDINATE SYSTEM, LAMBERT CONFORMAL PROJECTION, ZONE III NAD 83, CALIFORNIA, AS DESCRIBED IN SPECIAL PUBLICATION NO. 235, PUBLISHED BY NATIONAL OCEAN SURVEY.

1.00 INDICATES THE NUMBER AND BEGINNING OF A LINE OF SOUNDINGS.
PROJECT DEPTH IS 30 FEET FOR MAIN CHANNEL AND 36 FT FOR NAVY CHANNEL

US Army Corps of Engineers
San Francisco District
450 Market Street
San Francisco, CA 94102

DISCLAIMER: The United States Government furnishes no warranty, expressed or implied, concerning the accuracy, completeness, or information and the data furnished. The United States shall be under no liability whatsoever to any person by reason of any use made thereof. These data belong to the Government. Therefore the recipient may not transfer these data to others without also transferring this Disclaimer.

Access Constraints: The United States Government furnishes no warranty, expressed or implied, concerning the accuracy, completeness, or information and the data furnished. The United States shall be under no liability whatsoever to any person by reason of any use made thereof. These data belong to the Government. Therefore the recipient may not transfer these data to others without also transferring this Disclaimer.

Distribution Liability: The data represents the results of data collection/processing for a specific US Army Corps of Engineers activity and indicates the general existing conditions. The user is responsible for the results of any application of the data for other than its intended purpose.

Prepared Under the Direction of: JOHN D. CUNNINGHAM LT COLONEL, C.E. DISTRICT ENGINEER	Chart Date: Nov 26, 2019
Submitted: Hydro Survey Team Leader	Designed by: PDT
Recommended: Chief, Hydro Survey Section	Plotted By: PDT
Approved: Chief, Construction Branch	Checked By: PDT
	Drawn by: PDT

MARIN COUNTY
CALIFORNIA
MARE ISLAND STRAIT
CONDITION SURVEY
30 SEPTEMBER 2019

Sheet Reference Number
3 of 3